

PART OF THE E 1/2, SEC. 15, T.5N., R.1W., S.L.B. & M.  
**WHISPERING OAKS**  
 A P.R.U.D.

TAXING UNIT: 25

LOTS 7 TO 10, AND LOT 11 AMENDED\*

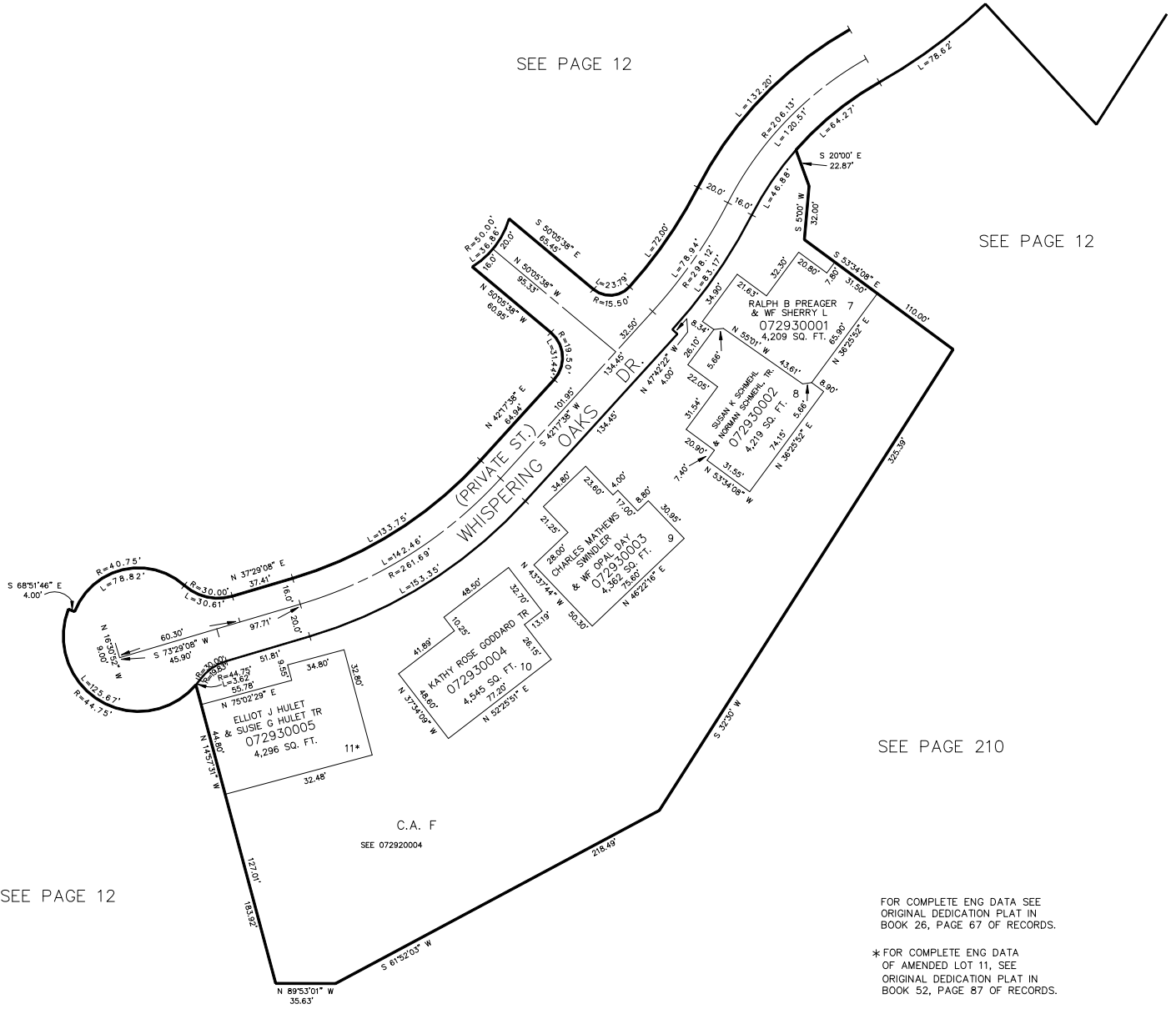
IN OGDEN CITY  
 SCALE 1" = 50'

SEE PAGE 292

SEE PAGE 12

SEE PAGE 12

SEE PAGE 210



FOR COMPLETE ENG DATA SEE  
 ORIGINAL DEDICATION PLAT IN  
 BOOK 26, PAGE 67 OF RECORDS.

\* FOR COMPLETE ENG DATA  
 OF AMENDED LOT 11, SEE  
 ORIGINAL DEDICATION PLAT IN  
 BOOK 52, PAGE 87 OF RECORDS.

SEE PAGE 12